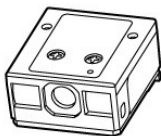


SE380 Scan Engine

EVA KIT



Quick Start Guide

International Edition, Rev B3

cino

© Copyright Cino Group

© Copyright PC Worth Int'l Co., Ltd

Cino makes no warranty of any kind with regard to this publication, including, but not limited to, the implied warranty of merchantability and fitness for any particular purpose. Cino shall not be liable for errors contained herein or for incidental consequential damages in connection with the furnishing, performance, or use of this publication. This publication contains proprietary information that is protected by copyright. All rights are reserved. No part of this publication may be photocopied, reproduced or translated into any language, in any forms, in an electronic retrieval system or otherwise, without prior written permission of Cino. All product information and specifications shown in this document may be changed without prior notice.

Warranty

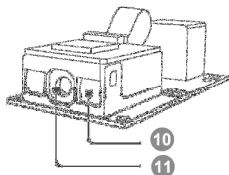
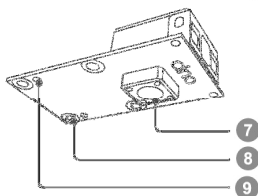
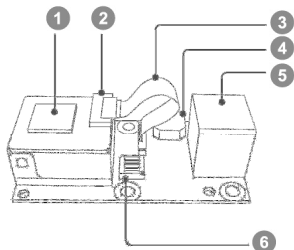
Cino warrants its products against defects in workmanship and materials from the date of shipment, provided that the product is operated under normal and proper conditions. The warranty provisions and durations are furnished by different warranty programs. The above warranty does not apply to any product which has been (i) misused; (ii) damaged by accident or negligence; (iii) modified or altered by the purchaser or other party; (iv) repaired or tampered by unauthorized representatives; (v) operated or stored beyond the specified operational and environmental parameters; (vi) applied software, accessories or parts are not supplied by Cino; (vii) damaged by circumstances out of Cino's control, such as, but not limited to, lightning or fluctuation in electrical power. Any defective product must follow the warranty program and RMA procedures to return Cino for inspection.

Getting Familiar with Your Scan Engine

Thank you for purchasing Cino FuzzyScan SE380 Series Scan Engine Evaluation Kit. The OEM miniature decoded out scan engine is designed for easy integration into devices which need scanning capability. It delivers superior reading performance, reliability and durability. The Evaluation Kit incorporates the engine with evaluation board, USB, RS232 interface cables and power steal cable. It enables you to make immediate evaluation once you plug in the interface cable.

This document provides an easy reference for installing and programming the SE380 Evaluation Kit. A complete documentation for FuzzyScan Scan Engine is provided by the FuzzyScan Programming Manual available on the Internet at www.cino.com.tw

SE380 Scan Engine Evaluation Kit



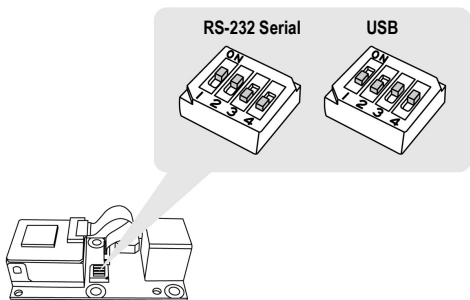
- 1 Main Processor
- 2 12-pin Interface Connector
- 3 Flex Cable
- 4 Beeper
- 5 Interface Cable Port
- 6 Dip Switch
- 7 Trigger
- 8 Standoff Hole (3.2 mm diameter)
- 9 Screw Hole (2.2 mm diameter)
- 10 Condenser
- 11 Lens

Host Interface Setting


FuzzyScan Scan Engine is designed to support RS232 Serial, USB HID and USB COM Port Emulation interfaces. Please choose RS232 or USB interface cable before connecting the Scan Engine Evaluation Kit and host device.

The default host interface of Evaluation Kit is USB COM Port Emulation. But for easy evaluation purpose, the host interface of Evaluation Kit has been preset to USB HID for your convenience. Please refer to following table and illustration to arrange the proper dip switch setting to get your desired host interface.

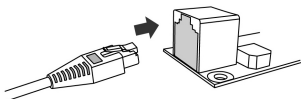
Dip Switch	RS232	USB
1	ON	OFF
2	ON	OFF
3	OFF	ON
4	OFF	ON



Please scan the corresponding Host Interface Quick Set barcode command to complete the host interface setting after you finish the dip switch setting.

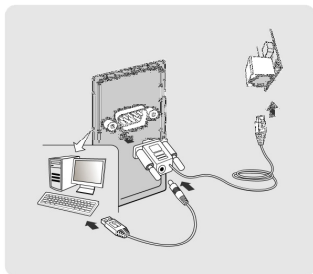
 If the USB COM Port Emulation interface is selected, you have to install the USB COM Port Emulation driver in your host system before using the Scan Engine. You can download the driver from the website www.cino.com.tw.

Connecting Interface Cable

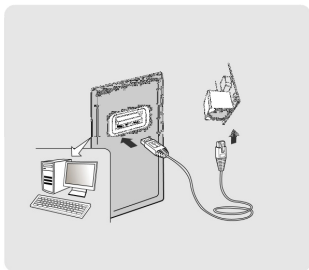
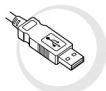


Connecting Host Interface

RS232 Serial



USB



Host Interface Quick Set



RS232 Serial



USB HID Turbo Mode



USB HID Standard Mode



◆USB Com Port Emulation

Operation Mode Quick Set



Low Power Mode



Presentation Mode



Force Mode



◆Trigger Mode



Alternative Mode



Level Mode

System Commands



System Information



Master Default



Factory Default

Serial Interface Control

Record Suffix



None



◆CR



LF



CRLF



TAB



SPACE

Baud Rate



115.2K BPS



57.6K BPS



38.4K BPS



19.2K BPS



◆9600 BPS



4800 BPS



2400 BPS



1200 BPS

Data Frame



◆8, None, 1



8, Odd, 1



8, Even, 1



8, Space, 1



8, Mark, 1



8, None, 2

USB HID Interface Control

Record Suffix



None



TAB



ENTER



◆RETURN



SPACE

Keyboard Layout



◆USA



Germany



Canadian French



Netherlands



France



United Kingdom-UK



Latin America



Japan