



FUZZYSCAN WAVECENTRE

Quick Reference Guide

International Edition, Rev. A2



cino

Table of Contents

About This Guide	1
Overview.....	1
Chapter Descriptions	1
Chapter 1: Getting Familiar with WaveCentre	2
Chapter 2: Preparation before Use	3
Install and Setup WaveCentre.....	3
Configure Wi-Fi Scanner.....	4
Connect the Wi-Fi Scanner.....	4
Chapter 3: Getting Started	6
Setup	6
General.....	6
Save Data.....	8
Console	9
Remote Control.....	12
Remote Indicator	12
Remote Message	13
Remote Lock/ Unlock	14
Logs.....	15

About This Guide

Overview

The WaveCentre is a useful Window-based wireless management utility together with an IP virtual COM software driver. Once you installed WaveCentre into your host machine, it can create a virtual COM port for each connected Wi-Fi scanner corresponding to its IP address. Then the Wi-Fi scanner will work as a local serial device of the remote host.

This document provides related information for using Cino Wi-Fi scanner together with WaveCentre.

Chapter Descriptions

Topics covered in this guide are as follows:

- Chapter 1, Get Familiar with WaveCentre
- Chapter 2, Preparations before Use
- Chapter 3, Get Started

Chapter 1: Getting Familiar with WaveCentre



- 1** Setup: You can make general settings of the WaveCentre and batch data file saving.
- 2** Exit: You can exit WaveCentre program.
- 3** About: You can review WaveCentre revision.
- 4** Console: You can perform WaveCentre specific functions.
- 5** Logs: You can review, clear and save logs of WaveCentre.

Chapter 2: Preparation before Use

Install and Set up WaveCentre

- 1 Make sure the WaveCentre software has been installed in your host machine properly.
- 2 Make sure the communication listen port of your host machine has been opened.
- 3 Double click WaveCentre's icon  shown on the desktop to launch the WaveCentre.
- 4 Enter **Setup** to configure the general settings.

 *Please refer to Setup Section for more details.*

Configure the Wi-Fi Scanner

Please make sure to fully charge the scanner. Then power on and configure the scanner before connecting it to your remote host.




Please refer to [FuzzyScan Wi-Fi CORDLESSS Quick Start Guide for details.](#)

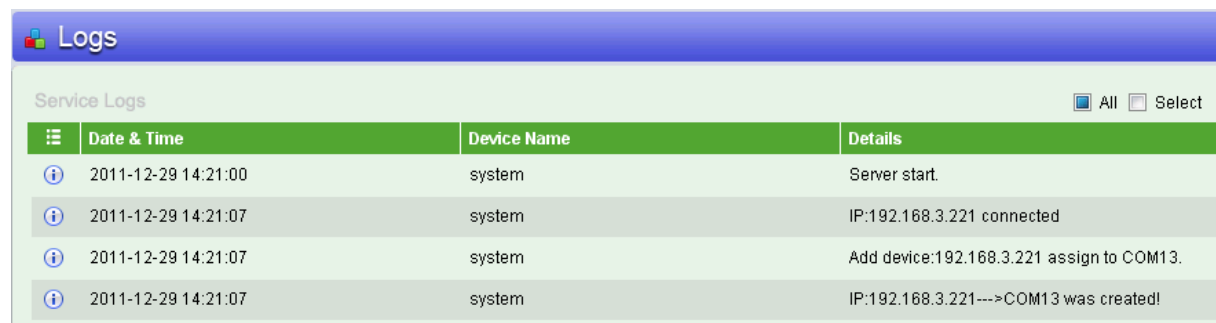
Connect the Wi-Fi Scanner

Before you connect the Wi-Fi scanner to a remote host, you have to create a correct Wi-Fi profile for the Wi-Fi connection. There are two ways to create Wi-Fi profiles. The easy way is to use the scanner “**SETUP**” to create a new profile. If you want to create multiple profiles at the same time, you may consider to use Cino FuzzyScan Wi-Fi PowerTool.

Once you collected all required information for network setting, please follow the steps below to establish the connection between the Wi-Fi scanner and the remote host.

- 1 Ensure the scanner is activated within radio range then enter “**SETUP**” from the Desktop main menu. Select “**Wi-Fi Profiles**”, then press “**New**” (L key) to add a Wi-Fi Profile. Select “**Auto Search**”, the scanner will perform “**Searching**” to find out all discoverable Access Points and Independent Wireless Hosts, and provide you a list.
- 2 For “**Infrastructure**” mode, select a suitable AP which is connected to the remote host then complete the profile setting. If you want to build a direct connection by using Ad-Hoc mode, please select desired independent wireless host, then complete the profile setting as well.

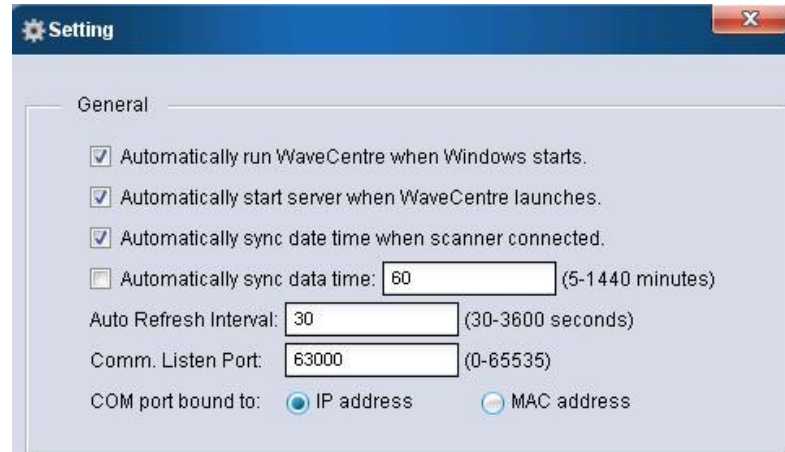
- 3 Once you completed the 1st Wi-Fi profile setting, the scanner will try to connect the remote host automatically. If you set several Wi-Fi profiles, please enter “ONLINE” from the main menu of Desktop, the scanner will try to connect the default profile. You will see the “**Connecting to**” screen, the scanner will give continuous short clicks and the link indicator of scanner will flash blue quickly during connecting process.
- 4 If your Wi-Fi setting is correct and there is no mistake during link process, the link process will be completed and you will hear 4 beeps in ascending tone. You will see the link indicator of scanner giving **1 blue blink per 2.5 seconds** to indicate the scanner is in radio-connected state.
- 5 Once the scanner is connected to the remote machine, you will see the device name and IP address of scanner shown on the console of WaveCentre. A red flag  icon will be displayed to indicate the scanner is connected to the host machine.



Chapter 3: Getting Started

Setup

General

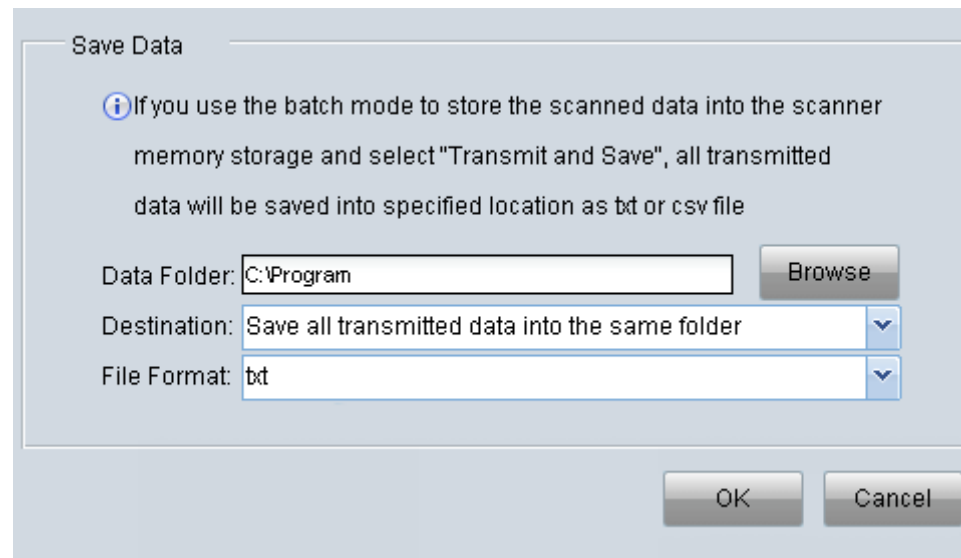


- Automatically run WaveCentre when Windows starts.
By default, the WaveCentre will run automatically when Windows starts.
- Automatically start server when WaveCentre launches.
By default, the WaveCentre server will start automatically when WaveCentre launches.
- Automatically sync date time when scanner connected.
By default, the WaveCentre will automatically sync the data time when the scanner connects to it.
- Automatically sync data time
By default, the server will sync the data time every 60 minutes automatically.
- Auto Refresh Interval
By default, the server will refresh every 30 seconds automatically.

- Comm. Listen Port
By default, the communication listen port is set to 63000.
- COM port bound to
By default, the COM port is bound to IP address.

Save Data

For batch scanning, all data transmitted via Wi-Fi interface can be saved as TXT or CSV file into your desired destination (folder) of the remote machine. Please enter **Setup**, then go to “**Save Data**” to configure related settings.



Save Data

i If you use the batch mode to store the scanned data into the scanner memory storage and select "Transmit and Save", all transmitted data will be saved into specified location as txt or csv file

Data Folder: C:\Program

Destination: Save all transmitted data into the same folder ▼

File Format: txt ▼

- 1 Data Folder: You can save the transmitted batch data file into your designated folder.
- 2 Destination: You can save the transmitted batch data file into the same folder, the subfolder by device or the subfolder by date.
- 3 File Format: You can save the transmitted batch data file as TXT or CSV file.





Console

The screenshot displays the 'Console' window of a Wireless Management Console. The window title is 'Console' and the subtitle is 'Wireless Management Console'. In the top right corner, there are 'Link' and 'Lock' icons. The main content is a table with columns for selection, LOG, status, Device Name, IP Address, selection, COM, and HID. Three devices are listed: L780WD-6666, L780WD-291c (highlighted), and F798WD-3067. Below the table, there are control buttons: 'Stop Server', 'Group Control', and 'Refresh'. Numbered callouts 1 through 11 point to various UI elements.

<input type="checkbox"/>	LOG				Device Name	IP Address	<input type="checkbox"/>	COM	HID
<input type="checkbox"/>	<input type="checkbox"/>				L780WD-6666	192.168.3.221	<input type="checkbox"/>	12	<input type="checkbox"/>
<input checked="" type="checkbox"/>	<input type="checkbox"/>				L780WD-291c	192.168.3.221	<input type="checkbox"/>	11	<input type="checkbox"/>
<input type="checkbox"/>	<input type="checkbox"/>				F798WD-3067	192.168.3.221	<input type="checkbox"/>	10	<input checked="" type="checkbox"/>

Buttons: Stop Server (9), Group Control (10), Refresh (11)

Callouts: 1-5 (table columns), 6-8 (table columns), 9-11 (buttons)

- 1 Group Control Options: You can check the box to choose the scanners which you desire to perform group remote control.
- 2 LOG: You can choose desired scanner's logs to be shown on Service Logs by checking the box, then choose "Select" shown on the upper right corner of the service logs. If you would like to see all scanners' logs, you don't have to check the box, but make sure the "All" shown on the upper right corner of the service logs is selected.
- 3 Link Status: A read flag icon  will be displayed if the scanner is connected to the host machine.
- 4 Scanner Lock Status: A lock icon  will be displayed if the scanner is remote locked.
- 5 COM Port Status: A red triangular pyramid icon  will be displayed if the COM port is closed. A green triangular pyramid icon  will be displayed if the COM port is open.
- 6 COM Port Binding Status: The different COM port might be assigned to the scanner when you rebuild the connection to the host machine. If you would like to bind the scanner to the same COM port, you can select the box.
- 7 COM Port: This is the COM port assigned to the scanner.
- 8 HID Conversion: All incoming data will be converted as HID keyboard inputs if you enable this feature by selecting the box.

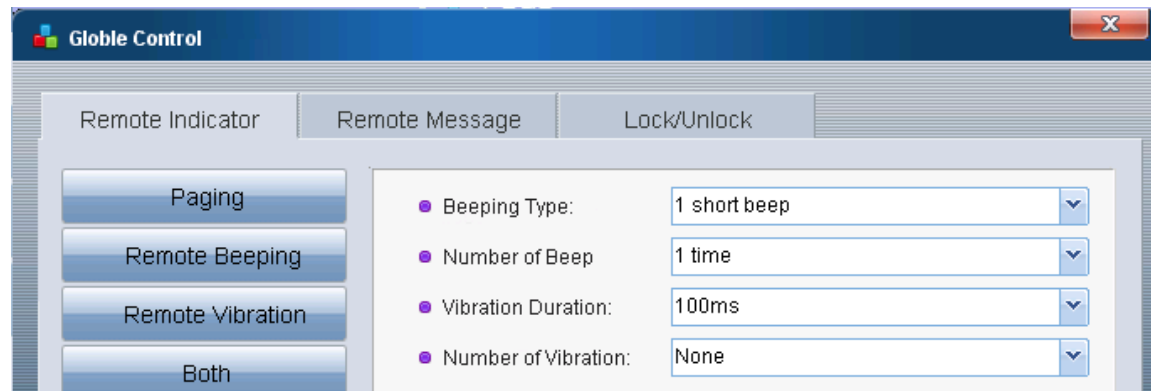
- 9 Stop/Start Server: You can stop/start the server by clicking this button.
- 10 Group Control: You can perform group control on the scanners you choose by clicking this button.
- 11 Refresh: You can refresh the server by clicking this button.

Remote Control

You can use the Remote Control commands to control the scanner(s) from the remote host either by left clicking the connected scanner's device name directly or clicking the "Group Control" button after you choose the desired scanner(s) to be remote controlled.

Remote Indicator

This command allows you to page, send remote beeping, remote vibration or both beeping and vibration to the scanner(s) from the remote host.

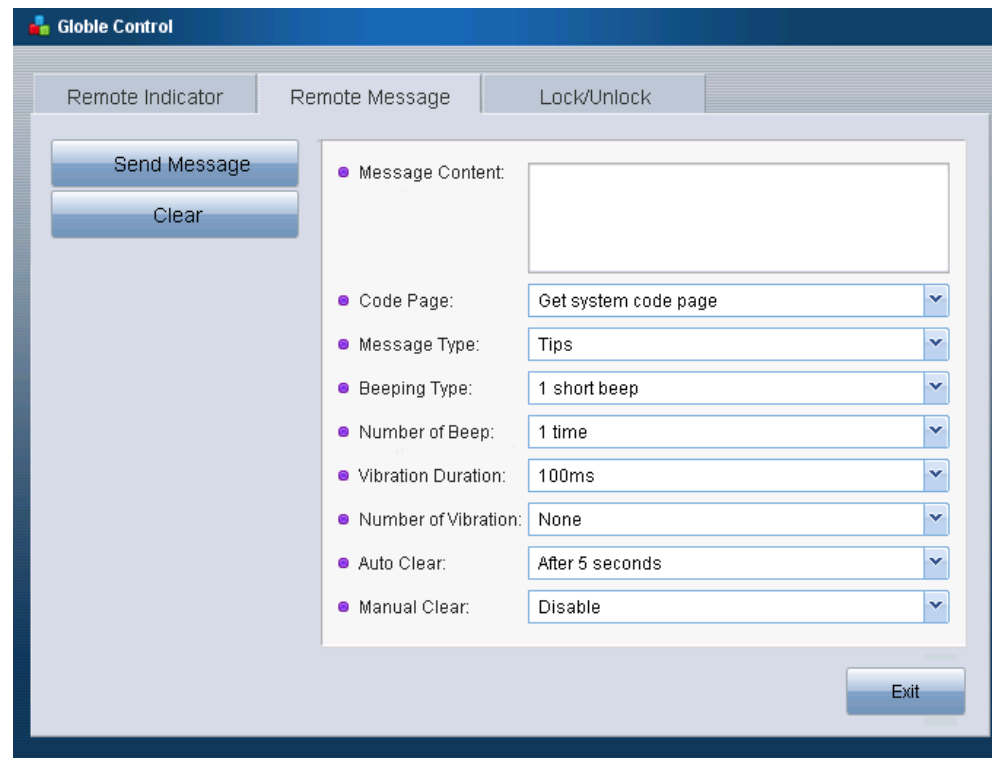


- 1 Paging: This paging function is helpful to locate the scanner. Once you clicked the "Paging" button, the scanner(s) will give six "Di-Do-Di-Do" paging sounds.
- 2 Remote Beeping: You can set up the beeping type and the number of beep first, then click the "Remote Beeping" button to send the remote beeping to the scanner(s).

- 3 Remote Vibration: You can set up the vibration duration and the number of vibration first, then click the “Remote Vibration” button to send the remote vibration to the scanner(s).
- 4 Both: You can set up the beeping type, number of beep, vibration duration and number of vibration first, then click the “Both” button to send the remote beeping and remote vibration to the scanner(s).

Remote Message

This command allows you to send remote message together with remote beeping and vibration to the scanner(s) from the remote host.



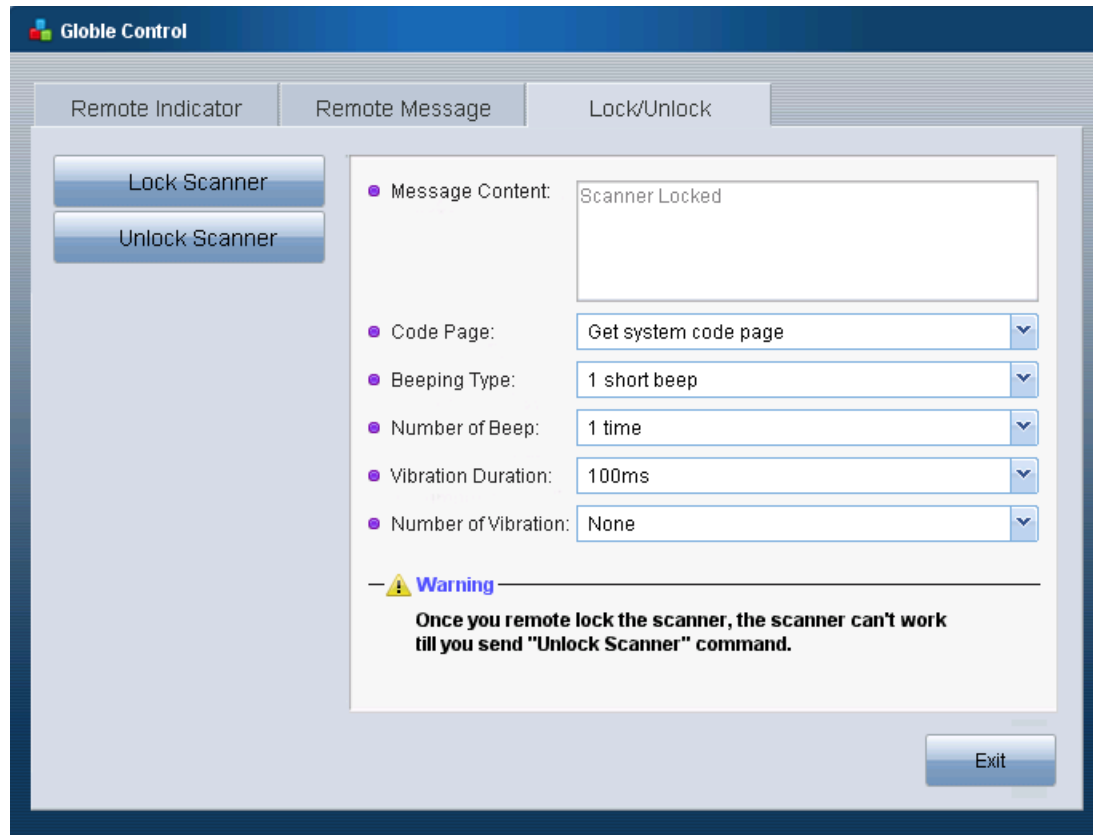
The screenshot displays the 'Globe Control' application window. The 'Remote Message' tab is selected, showing configuration options for sending a message to a scanner. The interface includes a 'Send Message' button and a 'Clear' button on the left. The main configuration area contains the following settings:

- Message Content: (Empty text box)
- Code Page: Get system code page
- Message Type: Tips
- Beeping Type: 1 short beep
- Number of Beep: 1 time
- Vibration Duration: 100ms
- Number of Vibration: None
- Auto Clear: After 5 seconds
- Manual Clear: Disable

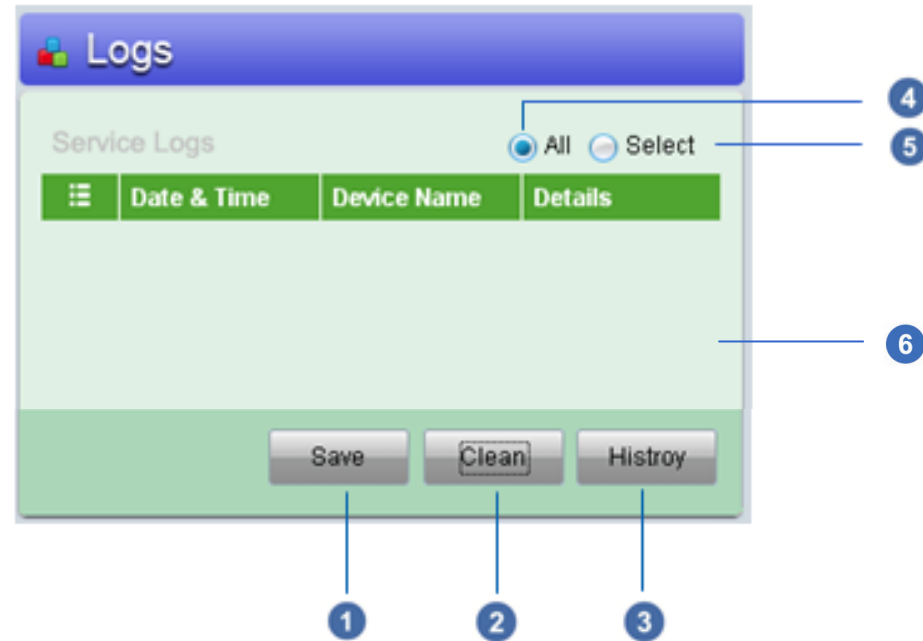
An 'Exit' button is located at the bottom right of the window.

Lock/Unlock

You can use this command to lock or unlock the scanner(s) remotely. Once you locked the scanner(s), the scanner can't work till you send unlock command.



Logs



- 1 Save: You can save logs of selected scanners.
- 2 Clean: You can clean the logs displayed on the screen.
- 3 History: You can review today, one week ago, half month ago or one month ago logs history.
- 4 All: You can display logs of all connected scanners.
- 5 Select: You can display logs of selected scanners.
- 6 Logs Content: You can see detailed logs of selected scanners.

FuzzyScan WaveCentre Reference Manual

CINO GROUP

PC WORTH INT'L CO., LTD. www.cino.com.tw